

Santa Catalina Island

K6PV

PORTABLE 6

NA-066

IOTA DXpedition



M1

M2

M3

M4

M5

M6

K6PV/6 Activates Santa Catalina Island, IOTA NA-066 !

Feb 26 – 28, 2010

**Or, What's the worst that can
happen, a Tsunami?!?**

The Intrepid K6PV/6 IOTA Team...

Ray N6HE

Jeff K6JW

Joe NZ6L

Bob AB6SY

Bill KG6WVF

Don KD6UMC

Ginger KG6TAU



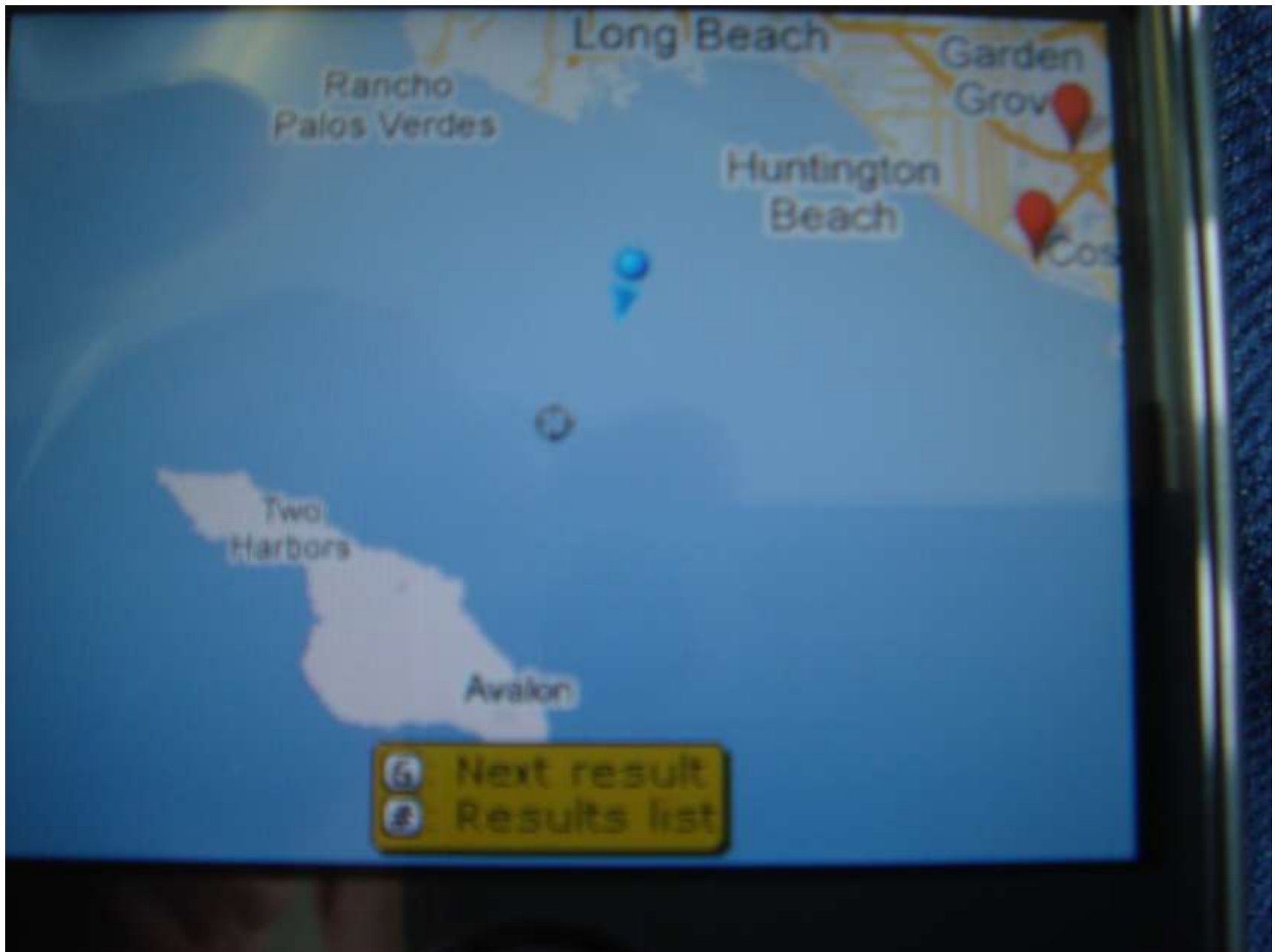
The K6PV/6 IOTA team gathers in Long Beach at the Catalina Express terminal



... and does some last-minute planning...



We set out for “Santa Catalina, 26 miles across the sea”



Joe's cell phone's GPS tracks us along the route to Catalina



Look! A whale! A whale!



Ginger, KG6TAU, our Master Food Provider, travels over with us, but must return to long Beach...



We approach Two Harbors – will we beat the rain?



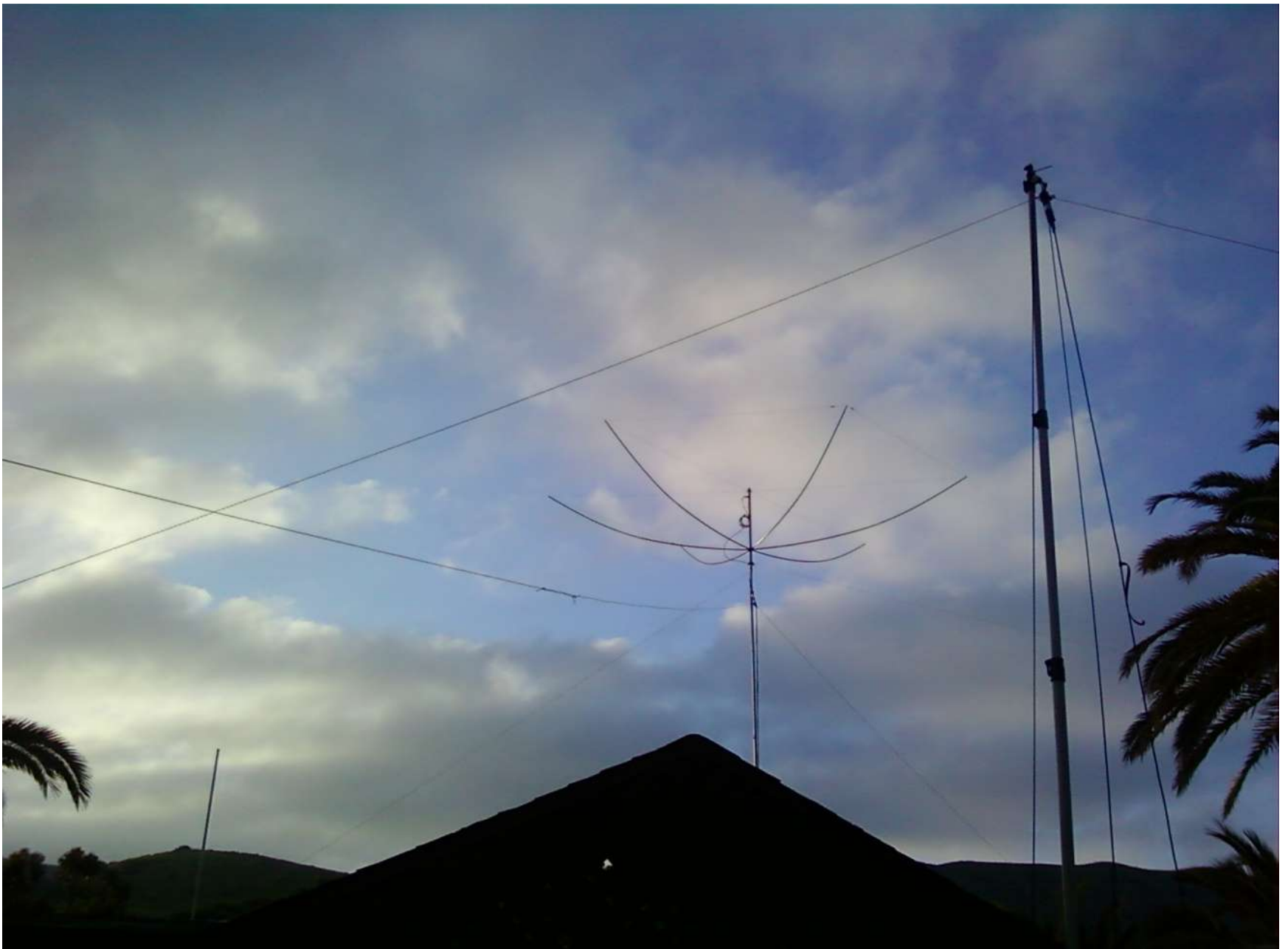
Well, Mel said everything would be in this here bag.....



The 20M Hex Beam starts to take shape



Mr. Buffalo visits us – and scratches himself on a pole



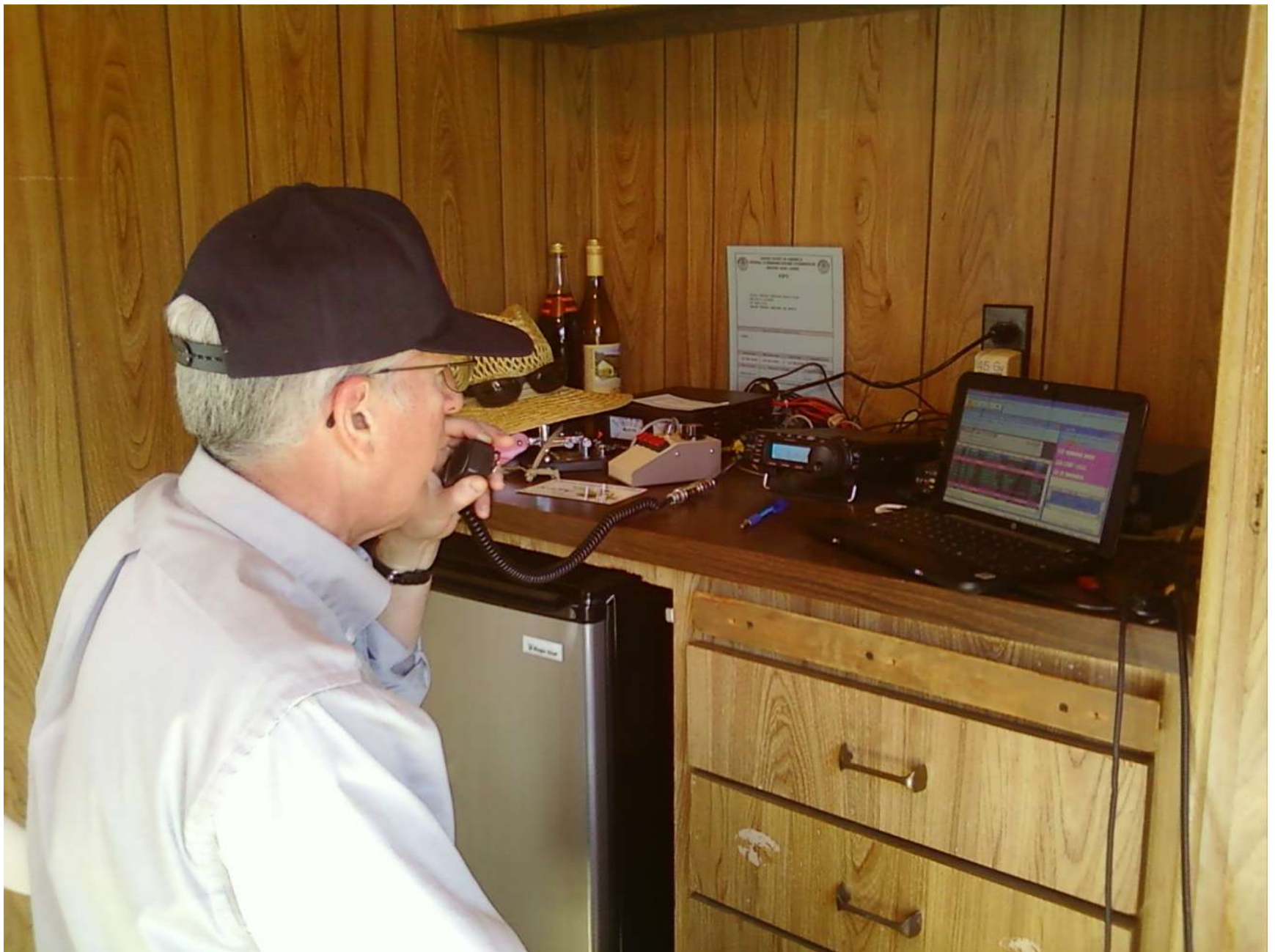
Hex Beam for 20M, dipole for 40M and initial trap dipole for 80-40-20M



Bob and Jeff admire the antennas – wonder if they'll stay up in the wind? If the Hex Beam comes down, Mel and Doris will KILL us!



Joe, "Da Prez" of PVARC, proudly hangs our K6PV Banner



Jeff tests out his Yaesu FT-857 on 20M



Ray with his Ten-Tec Omni VII starts on CW



It was a little cold on the first night



Dinnertime, courtesy of Ginger – notice 2 wine bottles and only 1 bag of food...



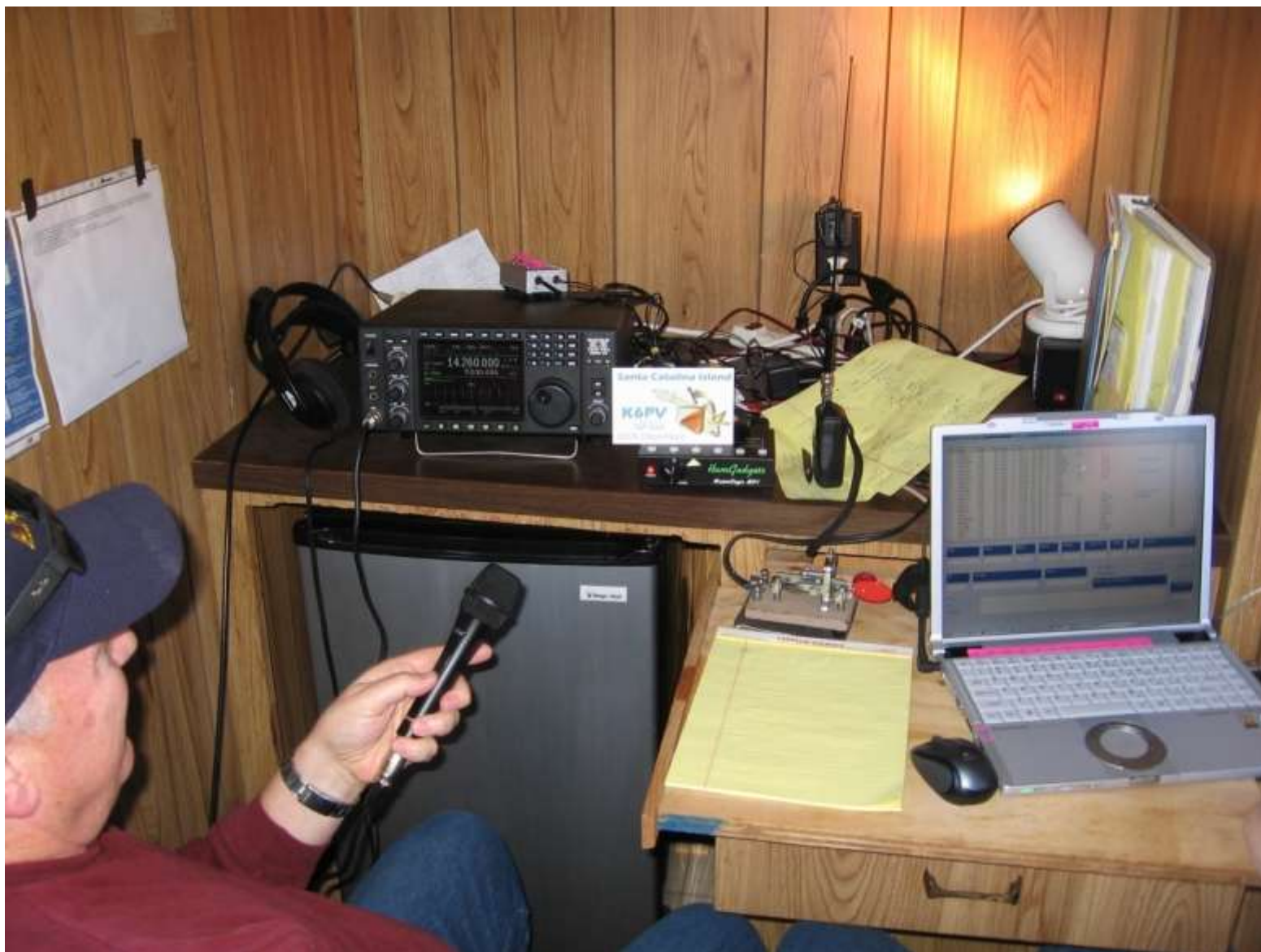
Life is good...the bands are open, the coffee is hot, and food is coming!



Jeff and Joe fire up first on 20M



The “Bob and Ray Show” comes on line next



Bob on 20M SSB



Doris' Hex Beam in all its glory – up about 35 feet



More antennas go up – and Bob runs his business at the same time



How did the locals know we were the “radio guys?”



We take down the trap dipole and get ready to put up the WA6ESC fan dipole



Bill WA6ESC has provided all the details for the fan (80-40-20M) dipole



The 80-40-20M fan dipole in all its glory



WA6ESC's fan dipole closeup – up 25 feet



We “lengthen” the 40M legs to tune well on CW/RTTY



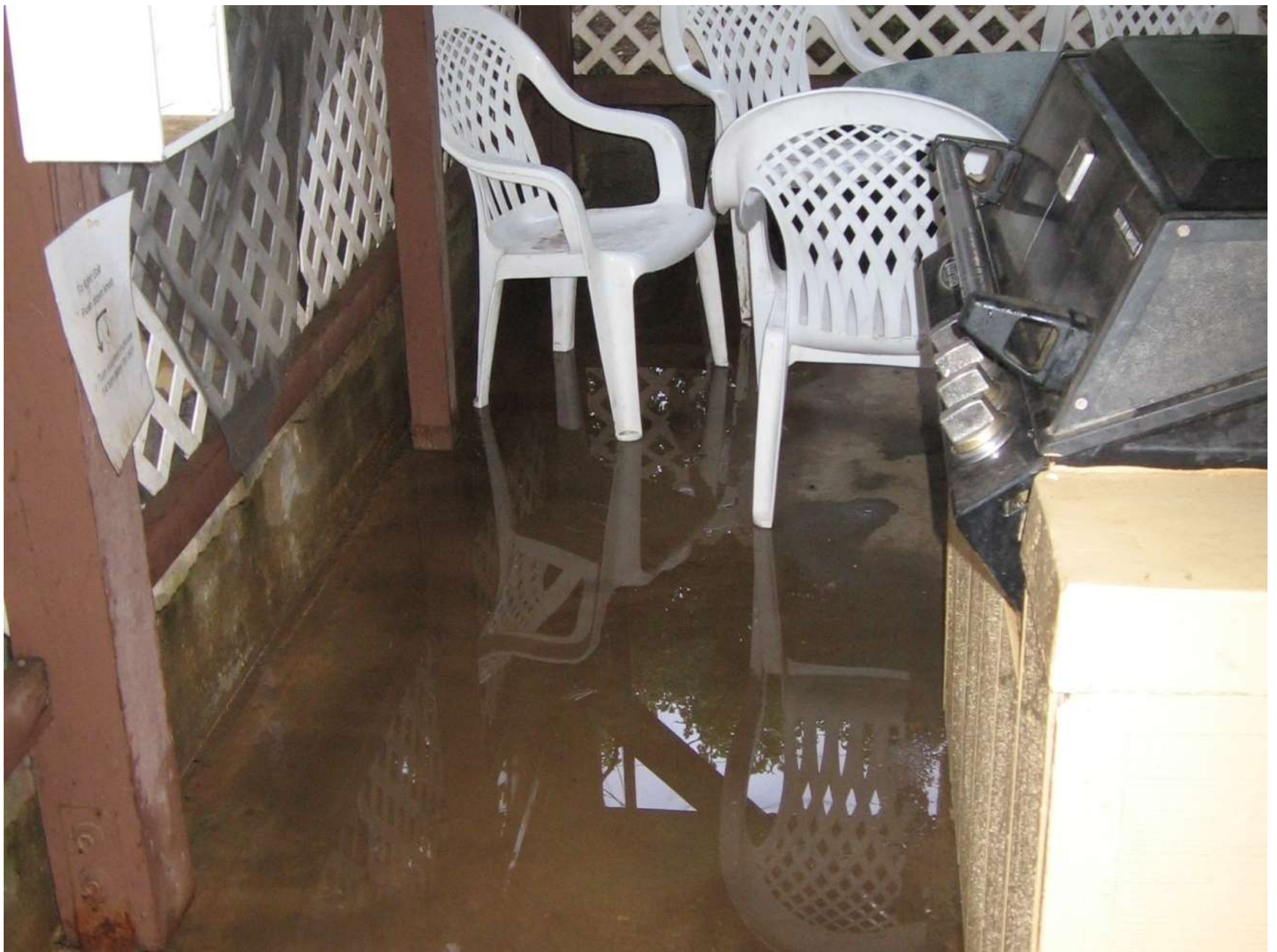
And the 80M dipole needs a bit more length, too... at least the palm tree didn't catch fire!



Chef Joe works on the Beef Stroganoff



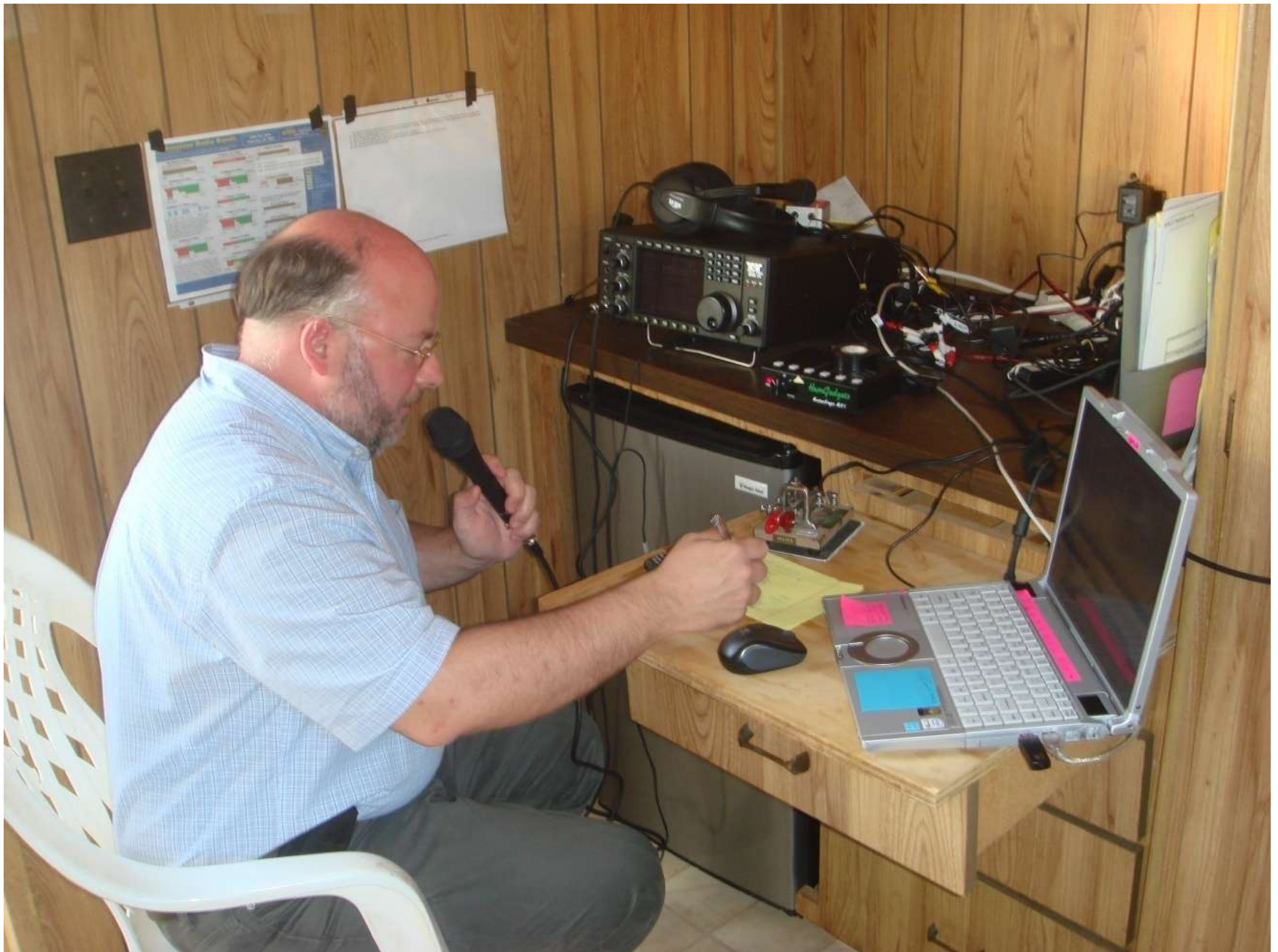
Don comes back from fishing – look what he caught!



Hmmmmm... looks like it rained a bit last night



OMG, is that a Wouff Hong on the wall???? We'd better watch our operating procedures!!!



Joe gets 'em logged



Don making one of our 149 RTTY contacts... is he focused, or what?



We get fancy and try a 160M dipole



We'll tie antennas to anything! What's that BZZZZZT noise?



Antenna Quiz – what is it?



Our antenna farm



We love our Hex Beam! Thank you Doris!



Our 2M/440 antenna with a 15M dipole on top



Saturday morning and A W8 asks us on 20M, "You're on Catalina Island? What's your elevation?" We close down and start to evacuate.....



We wait to be evacuated – note: our radios are our priority!



The first indication of the “Tsunami” – withdrawal from the shoreline...bay level down about 3 feet



...and it starts its return



Then, the tide goes wa-a-a-a-a-a-ay out



...and comes back...



...goes out again...



... and comes back again



We bravely come down from the hill and return to the radio rooms



But first, we discuss over hot coffee how we narrowly escaped with our lives!



Ray working the RTTY station – using only mouse clicks

K6PV/6

N3FJP's Amateur Contact Log 3.0

www.n3fjp.com

File Edit Settings Clear Callbook List Search Awards LoTW Country-List Recall Help

R...	Call	Date	Bnd	Mode	P...	On	S...	R...	Off	Country	St	Name	Off
235	W7CV	2/26...	40	SSB	1...	23:25	59	59	2...	USA	AZ		DEI
234	W7MC	2/26...	40	SSB	1...	23:22	59	59	2...	USA	AZ		SEI
233	KG6VH/M	2/26...	40	SSB	1...	23:21	59	59	2...	USA	CA		MIK
232	N7NEU	2/26...	40	SSB	1...	23:17	59	59	2...	USA	NV		GAI
231	WK6L	2/26...	40	SSB	1...	23:16	59	59	2...	USA	CA		ED
230	W6DOE	2/26...	40	SSB	1...	23:16	59	59	2...	USA	CA		GAI
229	W6NSE	2/26...	40	SSB	1...	23:15	59	59	2...	USA	CA		DAV
228	VE4MG	2/26...	15	CW	1...	22:53	59	59	2...	Canada			MAI
227	KB9AVX	2/26...	15	SSB	1...	22:49	59	59	2...	USA	WI		SCC
226	K9GJN	2/26...	15	SSB	1...	22:41	59	59	2...	USA	WI		GRE
225	W6DC	2/26...	20	SSB	1...	20:11	59	59	2...	USA	CA		DAN
224	KA0TOF	2/26...	20	SSB	1...	20:10	59	59	2...	USA	CO		BOB
223	K9KEJ	2/26...	20	SSB	1...	20:06	59	59	2...	USA	IL		ORR
222	W7JBM/M	2/26...	20	SSB	1...	20:04	59	59	2...	USA	OR		JOE
221	KA5BNS	2/26...	20	SSB	1...	19:58	59	59	1...	USA	TX		JOH
220	K7HLN	2/26...	20	SSB	1...	19:57	59	59	1...	USA	MT		BOB
219	K7DZW	2/26...	20	SSB	1...	19:56	59	59	1...	USA	OR		STE
218	N0ZPY	2/26...	20	SSB	1...	19:55	59	59	1...	USA	CO		DOU
217	K8CAA	2/26...	20	SSB	1...	19:54	59	59	1...	USA	OH		CRA
216	W8ADD	2/26...	20	SSB	1...	19:54	59	59	1...	USA	OH		GEN
215	KI4HEX	2/26...	20	SSB	1...	19:50	59	59	1...	USA	FL		NAPL

Call

Date

Band

Mode

Power

Time On

Holy Cow – computerized logging! Are we good or what?



Bob burns water...but you gotta have coffee, right?

What... no matches???



Jeff and the 20M “wall”



Bob working 40m SSB...



Joe works a “good ol’ boy”





Our traditional Saturday Night dinner out



Ain't it beautiful? (great shot, Bill!)



Sunday morning comes and we start the takedown



Take-down of the fan dipole – looks like Mardi Gras!



Ray gets the easy job . . .



The happy, well-fed K6PV/6 IOTA team waits for the boat back to the mainland

Our Final Results – K6PV/6

Total Contacts: 698(!)

Countries: 26

CW: 12

CQ ZONES: 17

RTTY: 149

States: 47

SSB: 537

(- ND, RI, VT)

Not too bad for goofing around on Catalina!

Many thanks to:

Antennas, poles, and fine wines: Mel K6SY and Doris K6KSY

Lots of yummy pre-prepared food: Ginger KG6TAU

Operators: Ray N6HE, Jeff K6JW, Joe NZ6L, Bob AB6SY, Bill KG6WVF, and Don KD6UMC

Rigs/accessories: Ray N6HE, Jeff K6JW, and Mel K6SY

Pictures/videos: Ray N6HE, Jeff K6JW, Joe NZ6L, Bill KG6WVF, and Ginger KG6TAU

On-the-air “Tsunami” warning: Wes WD8JTJ

Hospitality: The Banning House on Catalina/Two Harbors

Last-Minute Rescue of Bob-of-the-Missing-Keys: Rowie Wolf

IOTA / Catalina is in the books for 2010

**Will *YOU* be there in
2011?**

Santa Catalina Island

K6PV

PORTABLE 6

NA-066

IOTA DXpedition



M1

M2

M3

M4

M5

M6